

ALTERNATIVE STATE QUARANTINE WELLNESS RETREAT PACKAGE

Updated 12 July 2021

SPECIAL PROMOTION*

For all arrivals until 31st December 2021

Complimentary
 Hotel Credit THB 2,500
 per adult / child

[Click here to view
 Hotel Video](#)

Two-Bedroom Premier

NEWEST HOTEL AND SERVICED RESIDENCE IN BANGKOK

Apartment Type <i>(Serviced residence with all the hotel services)</i>	Room Size	14 Days Quarantine 15 Nights / 16 Days (3 Swab Tests)	Number of Adults
Deluxe	33sqm.	THB 59,500 nett	1
Studio Executive	42sqm.	THB 63,500 nett	1
One-Bedroom Executive	57sqm.	THB 77,500 nett	1
One-Bedroom Premier	57sqm.	THB 87,500 nett	1
Two-Bedroom Premier	90sqm.	THB 127,500 nett	2
Three-Bedroom Premier	123sqm.	THB 187,000 nett	3

Thai government subsidy is available for Thai passport holders.

Residence Features and Amenities

Stylishly designed for comfort and relaxation, hotel and serviced residences with a host of indulgences

Key features include:

- Designated smoking rooms are available.
- Residences come with fully equipped kitchen starting from Studio Executive
 - Glassware, crockery, cutlery & utensils
 - Electric kettle, microwave oven/ grill & toaster
 - Refrigerator
- *(Full sized in Studio Executive, 1 - 2 - 3 Bedrooms and minibar in Deluxe)*
- 2-seater sofa, a large coffee table and a separate working desk & chair
- 43-inch SMART Television with internet connectivity. Bluetooth Soundbar and 49-inch SMART Television in Living Room for One and Two Bedroom only
- Separated Rain Shower and Bathtub is available in One and Two Bedrooms only
- 4-seater dining table in One Bedroom and 6-seater dining table in Two Bedroom
- Partially accessible balcony is available in 1 - 2 - 3 bedroom premier only

Complimentary Services

- Welcome hamper on arrival. Includes essentials such as
 - Cereal, Soy Milk, Instant Noodles, Crackers, Bread, Butter and Fruit
- All meals included – Selection of breakfast, lunch and dinner. Rotational Menu with International, Thai, Asian and Vegetarian Meal Options Served. Special diet and Halal Certificate are available upon request at the time of booking
 - Upgrade to our special Vegan, Keto, Nutri-Slim, and Nutri-Shred diets for THB 5,500 nett/ 15 nights only. Rates are on per pax basis.
- Tea and Coffee Making Facilities and 3 bottles of 1,500 ml Mineral Water per day
- Complimentary high speed internet at 15 Mbps/room
 - Premium package at 30 Mbps at an additional cost of THB 1,500/ 15 nights per room per stay
- Room cleaning service will be provided as per new regulations
- 20% Discount on Laundry (except dry cleaning)
- Inclusive of one-way trip transfer between Suvarnabhumi International Airport or Don Mueang International Airport to the hotel

Optional Services with additional charges

- Pre-book & buy your Somerset FitKit with us! Includes 2 Kg or 5 Kg Dumbbells and a 6 mm yoga mat at THB 1,099 nett only
- For game enthusiasts' pre-book & rent your PlayStation 4 with one Console and seven Games (only listed game) for THB 3,000 nett only (Subject to Availability)
- Additional game and extra console additional charge applied
- Laundry Package available for 20 pieces at THB 2,500 nett or 30 pieces at THB 3,500 nett (excludes dry cleaning services)
- Additional THB 2,500 nett for Pick up from U-Tapao Airport
- Treadmill and indoor Fitness Bikes available for rent on request (subject to availability)
- Nespresso machines available for rent with 20 capsules included at THB 2,000 nett or 30 capsules included at THB 3,000 nett



Complimentary services from Samitivej Thonburi Hospital

- COVID-19 screening tests (RT – PCR) as per new regulations
- 24-hour registered nurse on duty stationed at Somerset Rama 9 Bangkok
- Certified medical staff on site for any health-related needs whilst under quarantine
- Daily health monitoring
- In-room welcome kit (face mask and alcohol gel)
- Admittance to Samitivej Thonburi hospital if tested positive for COVID-19
- Issuance of regular official reports on the status of each patient under observation
- Official COVID-19 free certificate on day 15 prior to the patient's release

Additional Information for Your Safety and Convenience

- Individual Split Type Air Conditioner for extra safety and better temperature control
- Complimentary emergency transportation from Hotel to Samitivej Thonburi Hospital if tested COVID positive
- 30-minute drive from Somerset Rama 9 Bangkok to Samitivej Thonburi Hospital

Extra Adult & Child Policy

- Additional Child or Dependent Adult is charged at THB 39,500 nett / 15 nights
(when sharing the same room, includes all services and hospital fees)
- Additional Infant without meal requirements is charged at THB 29,500 nett / 15 nights
(when sharing the same room, includes all services and hospital fees)

Terms & Conditions

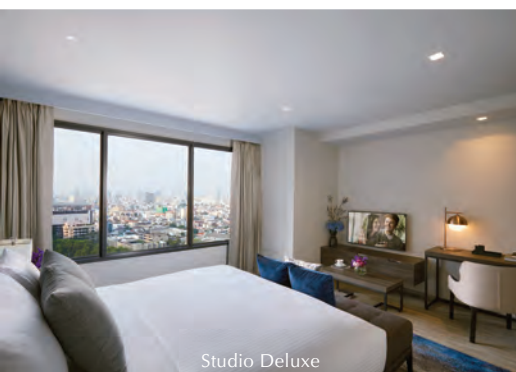
- The package rate only applied for Thai residence with Thai passport has been provided.
- 25% pre-payment is required at the time of booking. Rest 75% is required 7 days prior to arrival. Rates are inclusive of Taxes and Service Charges.
- Package is designed for 15 nights / 16 days stay. Earliest check out on date of departure will be at 06.00 hours.
- Check out at 12.00 pm on the date of departure. Complimentary late check out at 2.00 pm is subject to availability and must inform the hotel in advance.
- Benefits may not be used in conjunction with any other discounts or exchanged for any other services or cash.
- Amendment is required 7 days in advance.
- Late cancellation charges apply at
 - 50% of total amount when canceled 13 to 8 days from the date of arrival
 - 100% of the total amount when canceled within 7 days from the date of arrival
- If the guest tests positive for COVID-19 during their stay, the full amount will be charged will not be refunded. In-case of an alternative accommodation is provided an additional charges of THB 20,000 will be levied for sanitization of the previous room occupied.
- Use of swimming pool and gymnasium is currently not allowed as per the direction from the Ministry of Public Health. In case the guest use these areas, a sanitization cost of THB 20,000 will be levied for the safety of all our guests. In case of any changes or updates in the future on the usage of the prohibited areas, the hotel will notify all guests and will open these areas for guest use.



ASCOTT
CARES

Our Commitment to Hygiene and Cleanliness

Ascott Cares is our commitment to maintaining high levels of hygiene and cleanliness standards as well as safe distancing to continue providing a safe home for you and a safe working environment for our staff. To know more please visit us on <https://www.the-ascott.com/en/ascottcares.html>



Studio Deluxe



One-Bedroom Premier - Dining and Kitchen Area



Two-Bedroom Premier

Somerset Rama 9 Bangkok

For more information and reservations, please contact (66) 2239 1999 email guestservice.sr9@the-ascott.com
www.somerset.com